

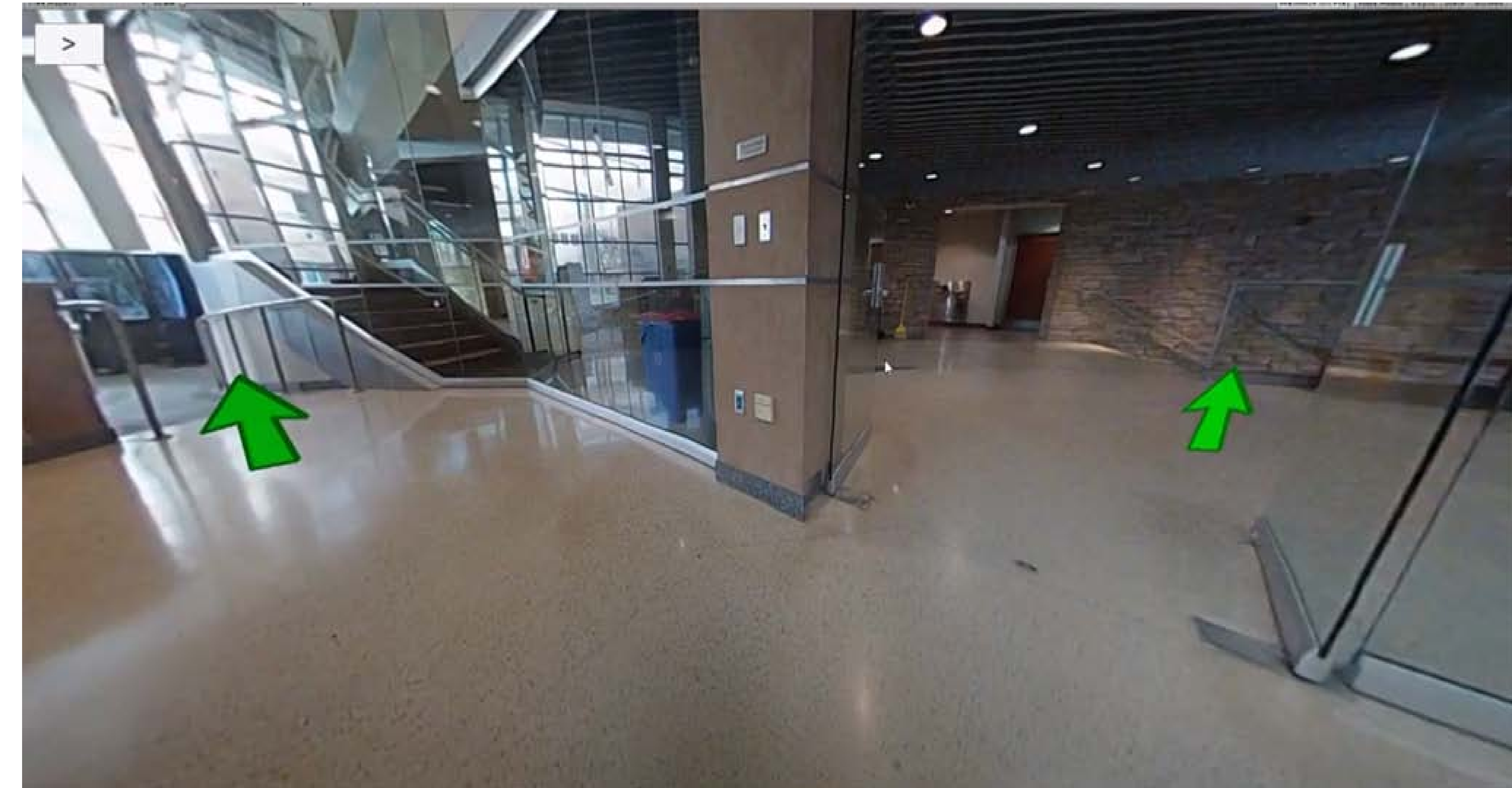


Walk Chalk (Team 17)

Matthew Eagle (CS), William Graham (CS), Zachary Harris (CS), Douglas Newman (CS), Xianye Zhou (CS)

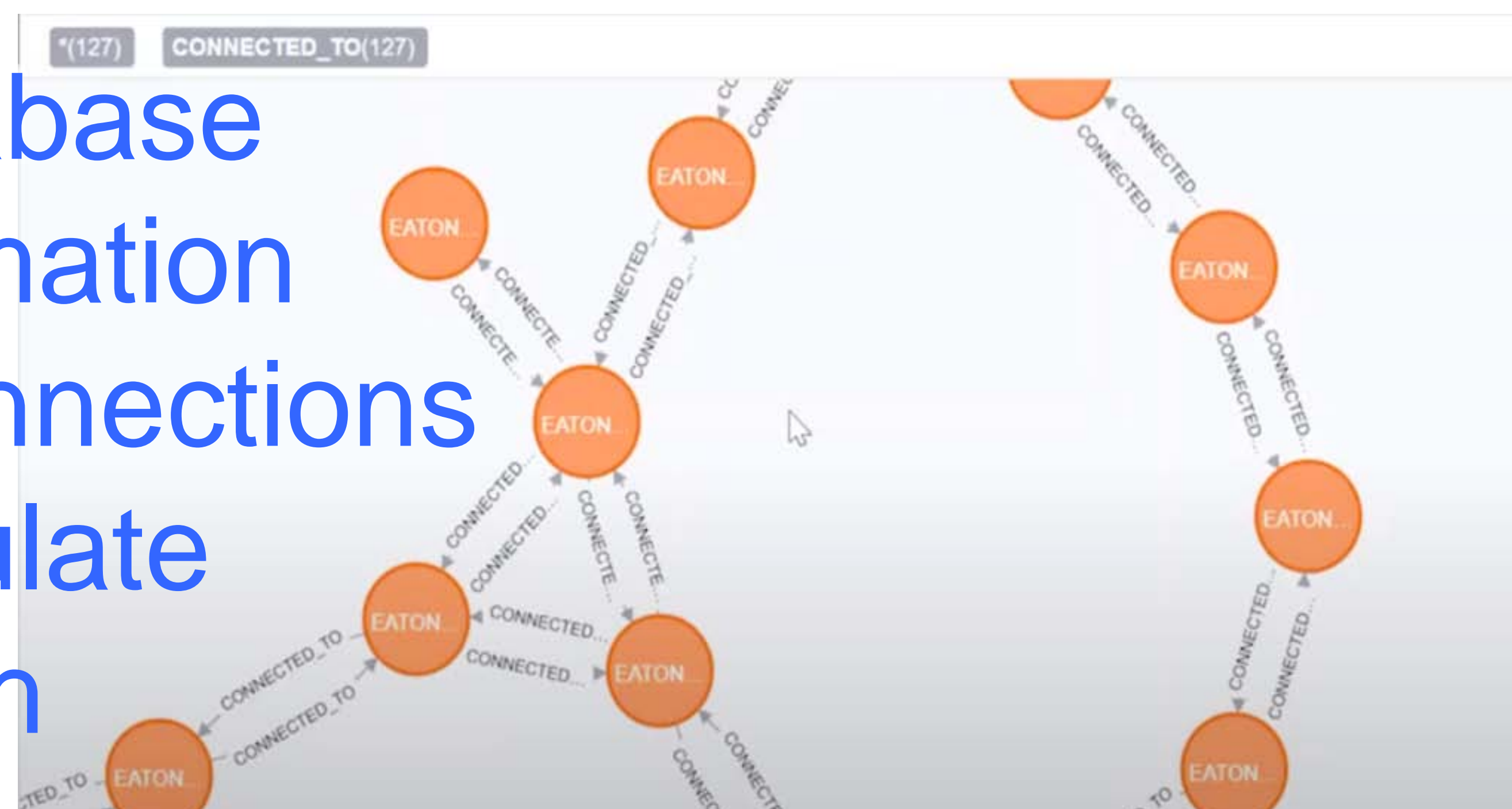
Description & Purpose

- Explore campus through a series of 360 photos
- A better way to navigate campus
- Helpful tool for new students or those wanting to see the campus
- Easily search for and navigate to a specific area or classroom



Design

- Graph Database
- Store information between connections
- Easily calculate shortest path



Ethical & Intellectual Property Issues

- Potentially unflattering images
- Copyrighted information possibly captured in photos
- Openstreetmap licensing changes